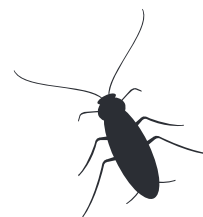


Gentrol®

IGR CONCENTRATE
with GENTROL® Insect Growth Regulator



CONTROLS COCKROACHES, DRAIN AND FRUIT FLIES, BEDBUGS, AND STORED PRODUCT PEST POPULATIONS
USE IN FOOD AREAS OF FOOD HANDLING ESTABLISHMENTS
FOR FOGGING IN FOOD HANDLING ESTABLISHMENTS

SPECIMEN LABEL

ACTIVE INGREDIENTS:

(S)-Hydroprene (CAS #65733-18-8) 9%

OTHER INGREDIENTS*: 91%

Total 100%

*Contains petroleum distillates

EPA Reg No. 2724-351

KEEP OUT OF REACH OF CHILDREN

CAUTION

SEE ADDITIONAL PRECAUTIONARY STATEMENTS

PRECAUTIONARY STATEMENTS
HAZARDS TO HUMANS AND
DOMESTIC ANIMALS – CAUTION

Harmful if swallowed or absorbed through skin. Causes moderate eye irritation. Avoid contact with eyes, skin, or clothing. Wash thoroughly with soap and water after handling.

FIRST AID	
Call a poison control center or doctor immediately for treatment advice.	
If swallowed	<ul style="list-style-type: none"> • Immediately call a poison control center or doctor. • Do not induce vomiting unless told to do so by a poison control center or doctor. • Do not give any liquid to the person. Do not give anything by mouth to an unconscious person.
If in eyes	<ul style="list-style-type: none"> • Hold eye open and rinse slowly and gently with water for 15-20 minutes.

	<ul style="list-style-type: none"> • Remove contact lenses, if present, after the first 5 minutes. Then continue rinsing eye.
If on skin or clothing	<ul style="list-style-type: none"> • Take off contaminated clothing.. • Rinse skin immediately with plenty of water for 15-20 minutes.
If inhaled	<ul style="list-style-type: none"> • Move person to fresh air. • If person is not breathing, call 911 or an ambulance, then give artificial respiration, preferably by mouth-to-mouth, if possible.
Have the product container or label with you when calling a poison control center or doctor, or going for treatment. You may also contact 1-800-248-7763 for emergency medical treatment information.	
NOTE TO PHYSICIAN: Contains petroleum distillates. Vomiting may cause aspiration pneumonia.	

PHYSICAL OR CHEMICAL HAZARDS

Do not use this product in or on electrical portions of equipment due to the possibility of shock hazard.

DIRECTIONS FOR USE

It is a violation of Federal Law to use this product in a manner inconsistent with its labeling.

GENERAL INFORMATION

GENTROL®, an Insect Growth Regulator (IGR), is a synthetic, juvenile hormone "look-alike" which disrupts the normal growth development of cockroaches, drain flies, fruit flies, bedbugs, and stored product pests (examples of these pests include Indian meal moths, rice moths, tobacco moths, red flour beetles, confused flour beetles, lesser grain borers, merchant grain beetles, sawtooth grain beetles, warehouse beetles,

cigarette beetles, and Dermestid beetles). Cockroaches and bedbugs exposed to the GENTROL IGR will become adults incapable of reproducing. GENTROL also disrupts the normal life cycle of stored product pests, drain and fruit flies, and fleas; thus killing these insects during the pupal stage. In both cases, the cycle of an infestation ends. Use GENTROL® IGR Concentrate (GENTROL) in apartment buildings, bakeries, bottling facilities, breweries, boiler rooms, cafeterias, candy plants, grocery stores, day care centers, hospitals, residential homes, hotel/motels, office buildings, kitchens, laboratories, cereal processing facilities, manufacturing plants, mausoleums, meat and produce canneries, nursing homes, restaurants, schools, locker rooms, stores, taverns, warehouses, as well as various modes of transportation such as aircraft, buses, trucks, trailers, rail cars, and marine vessels.

Use GENTROL as a general surface spray, fogging, spot, or crack and crevice application.

Prior to using in commercial or residential (household) food areas, please refer to the Food Handling Establishment Applications section of the label. The preparations prior to treatment and the clean up after application described therein are also to be followed for residential (household) use.

INSTRUCTIONS FOR USE

Mix GENTROL with water and apply with spray or hand application equipment, such as hand-pressurized or power-operated sprayers capable of delivering general surface, spray, fogging (space spray/mist), spot, crack and crevice spray applications, or with a paint brush, roller, or similar device.

DILUTION PREPARATION FOR SURFACE SPRAY/PAINT BRUSH, SPOT AND CRACK AND CREVICE PREPARATIONS

Use 1 ounce of GENTROL to 1 gallon of diluent. Partially fill the mixing container with diluent, add the GENTROL, shake or stir, and fill to final volume. Use diluted solution within 48 hours of mixing. Shake or stir before each use. For fogging preparation follow equipment manufacturer's instructions.

TANK MIXING

GENTROL may be tank mixed with an adulticide currently registered for use, unless the product label prohibits such use. Use the resulting tank mixture in accordance with the more restrictive label limitations and precautions.

GENERAL SURFACE APPLICATION

Apply the GENTROL dilution at a rate of 1 gallon per 1500 sq ft of surface area. Use spray/application equipment capable of delivering a variable spray or coating to uniformly apply the solution. Apply to areas such as walls, floors, ceilings, attics, basements, or crawlspaces. NOTE: Prior to treating around air ducts, shut off ventilation system. Allow treatment to dry prior to turning on ventilation system.

FOGGING (SPACE SPRAY/MIST) APPLICATION

Apply GENTROL as a fog or an ultra-low volume (ULV) mist with equipment such as ULV, mechanical misting sprayers, aerosol generators, or thermal foggers to achieve uniform coverage. Follow equipment manufacturer's instructions. Apply at a rate of 1 ounce GENTROL per 12,000 cu ft. GENTROL may be tank mixed with adulticides labeled for fogging. Follow the directions of the more restrictive label when tank mixing. Use water or oil as a diluent, depending on the type of equipment used. Fogging applications are best for larger facilities including warehouses (Refer to Warehouses section below). Close room or warehouse and shut off all ventilation systems. Apply the product in the air and direct mist toward all areas that may harbor target pests. After treatment, leave the room closed for 30 minutes or longer as recommended by the equipment manufacturer or the labels of other products applied in tank mixing. Do not remain in treated area; ventilate before reentry.

SPOT AND CRACK AND CREVICE APPLICATIONS

Apply GENTROL diluted spray solution using either a pressurized spray system capable of delivering a pinpoint or variable spray pattern or a device capable of coating evenly. Make crack and crevice applications directly to areas such as crevices, baseboards, floors, ceilings, or walls. Make spot treatments to areas such as storage areas, closets, around water pipes, doors, windows, and behind and under appliances/equipment, furniture and beds.

To treat bedbugs, apply to harborage points mentioned above; in addition, under beds, bottom side of box springs (do not treat linens and mattresses), under and behind night stands, to points where carpet and wall meet, cracks in cove base, molding, and other areas where bedbugs harborage. Retreat at 14 days for heavy infestations.

WAREHOUSES (Non-Food)

Apply GENTROL as a general surface, fogging, spot, or crack and crevice treatment in non-food storage warehouses. Apply to all areas that may harbor pests, including under and between pallets.

FOOD HANDLING ESTABLISHMENT APPLICATIONS

Apply GENTROL as a general surface, fogging, spot, or crack and crevice treatment in both food and non-food areas of Food Handling Establishments. These establishments are defined as places other than private residences where exposed food is held, prepared, processed, or served. It also includes areas where food items are received, prepared, packaged, and stored, as well as enclosed food processing systems (mills, dairies, etc).

SPOT AND CRACK AND CREVICE APPLICATIONS

Prior to application, remove or cover all food items in area to be treated. Do not apply directly to food or food-handling surfaces.

FOR CONTROL OF DRAIN FLIES, FRUIT FLIES

Apply GENTROL to areas of fly breeding. For drains, apply product into and around the downspout and catch basin area. Coat these areas thoroughly as fly larvae develop in the scum buildup on the sides of drain pipes. Repeat applications at 2 to 4 week intervals depending upon the severity of infestation.

ALTERNATE DIRECTIONS FOR FOAM APPLICATION

Refer to the Dilution Preparation section of this label for appropriate dilution rate for GENTROL. To convert GENTROL dilution to a foam, add foaming agent at manufacturer's rate. For best results, use the higher amount of the foaming agent rate range. Follow the requirements of the foam equipment manufacturer.

SURFACE SPRAY APPLICATION

DO NOT APPLY DIRECTLY TO FOOD PRODUCTS GENERAL AREA TREATMENTS

Refer to the Dilution Preparation section of this label for Prior to application, remove or cover all food items. Also, cover all food contact surfaces (i.e., equipment, benches, shelves - areas where exposed food may be handled, held, prepared, processed, or served). If left uncovered, these areas must be thoroughly cleaned by a method capable of removing chemical residues after treatment.

PARTIAL AREA TREATMENTS

GENTROL can be applied to partial areas of food handling establishments in cases of small or localized infestations. For partial area treatments, a perimeter of at least 6 feet must be established (6 feet in all directions from the treated area), where all food handling surfaces are either covered at the time of treatment, or thoroughly cleaned by a method effective in removing chemical residues after treatment.

PANTRY/CABINETS, SMALL FOOD STORAGE AREAS

Apply as a surface spray, crack and crevice spray, or spot treatment to pantry and cupboard shelves or other areas where food is stored. Prior to spraying, remove all food containers and foodstuffs. Do not

replace food containers or foodstuffs until spray has dried. Do not store food in open containers in treated pantries. Destroy any infested food packages to ensure proper control.

FOGGING (SPACE SPRAY/MIST) APPLICATION

Prior to application, remove or cover all food items. Also, cover all food contact surfaces (i.e.; equipment, benches, shelves - areas where exposed food may be handled, held, prepared, processed, or served). If left uncovered, these areas must be thoroughly cleaned by a method capable of removing chemical residues after treatment.

WAREHOUSES (Food)

Apply GENTROL as a general surface, fogging, spot, or crack and crevice treatment in warehouses where packaged food items are stored in such a way that direct contact with the foodstuff is not anticipated.

STORAGE AND DISPOSAL

Do not contaminate water, food, or feed by storage or disposal.

STORAGE

Store in a cool area away from children.

PESTICIDE DISPOSAL

Wastes resulting from the use of this product may be disposed of on site or at an approved waste disposal facility.

CONTAINER DISPOSAL

Do not reuse empty container. Securely wrap original container in several layers of newspaper and discard in trash.

WARRANTY

Seller makes no warranty, expressed or implied, concerning the use and handling of this product other than indicated on the label. Buyer assumes all risks of use and handling of this material when such use and handling are contrary to label instructions.

For information, call **1-800-248-7763** or visit our Web site: **www.zoecon.com**



Wellmark International
Schaumburg, Illinois U.S.A.



Zoecon A Wellmark International Brand.
GENTROL® and ZOËCON® are registered trademarks of
Wellmark International
©2005 WELLMARK INTERNATIONAL

July, 2005
Schaumburg, IL